

A Purely Synthetic & Absorbable Material  
*for*  
CSF Rhinorrhoea repair

*P Modayil, S Little, A Toma*  
*St. George's Hospital*

# *CSF Rhinorrhoea*

Definition

Causes

Risk

Surgical approaches: Intracranial

Tran-nasal (preferred)

# *Materials used*

Fat plug, Fascia lata, Temporalis fascia

Free / pedicled mucosal grafts

Semi-synthetic

Synthetic

# *Materials used*

Fat plug, Fascia lata, Temporalis fascia

Free / pedicled mucosal grafts

Semi-synthetic

Synthetic

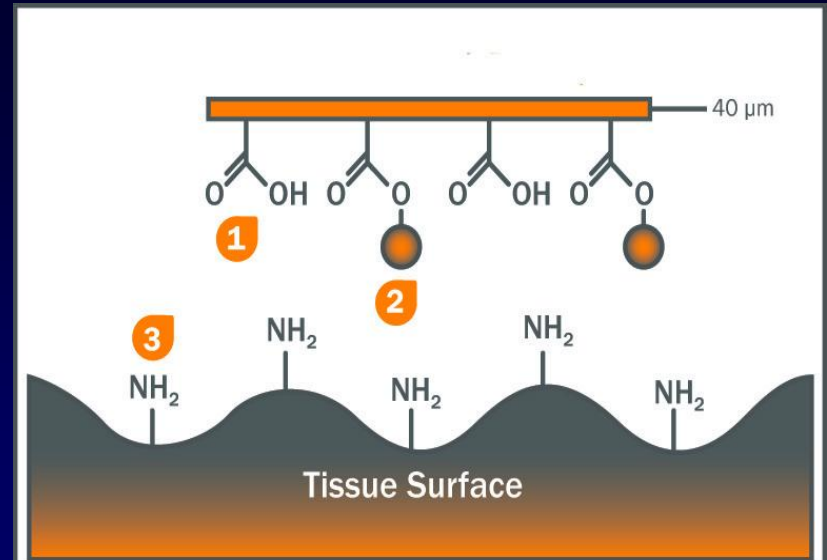
# TissuePatch Dural (OBEX)

## Poly(lactide-co-glycolide) (PLGA)

Ready to use multi-laminate film with an adhesive surface

Clings, bonds, and seals within 30 seconds

Absorbed in 50 days

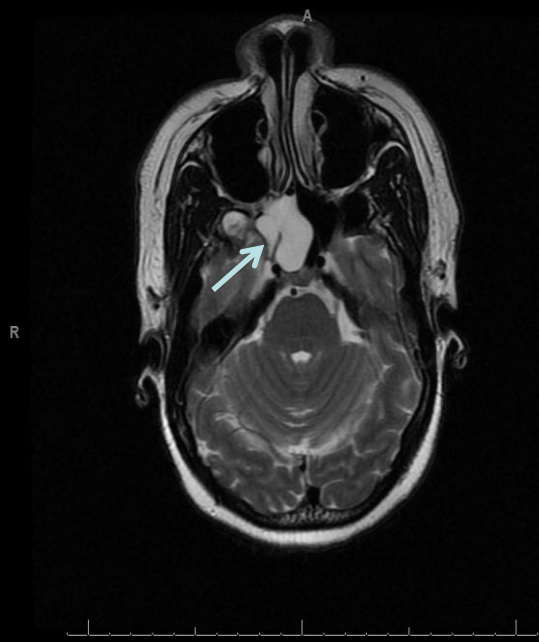


# Case Series

4 cases of CSF Rhinorrhoea- All  $\beta 2$  Transferrin positive

<b>Cases</b>	<b>Etiology</b>	<b>Site of leak</b>	<b>Size of leak</b>	<b>Radiology</b>
1	Traumatic	Sphenoid	4 mm	MRI
2	Spontaneous	Cribriform plate	10 mm	CT
3	Spontaneous	Cribriform plate	20 mm	CT
4	Traumatic	Ethmoid roof	4 mm	CT-C

MEDICAL GEORGINA  
1280710  
260301900  
Series #3  
Image #022  
5.00 mm



Slide  
5

S



Tech  
Zoom 165.8%

# *Technique*

Moffet's solution

One dose antibiotic on induction

Identify site of CSF leak and prepare the bed

TissuePatchDural (OBEX) film applied (overlay)

Tiseel applied as a second layer





# *Results*

All female patients

Age- 49.5 years (43 to 58 years)

Intra operative handling - Easy

Preparation time - Ready to use

Operative time- Mean 40 minutes

# *Results*

Mean follow up 12 months ( 9-24 months)

No post-operative complications

No post operative CSF leak (100% success)

# *Conclusion*

Novel technique

Purely synthetic and absorbable

Adhesive property makes handling easier

Avoids morbidity and increased operating

times

Thank You